



# MONTHLY MEMBERSHIP PROGRESS REPORT

District 318 E

Results as of: 05/31/2018

GMT: N S SANKAR

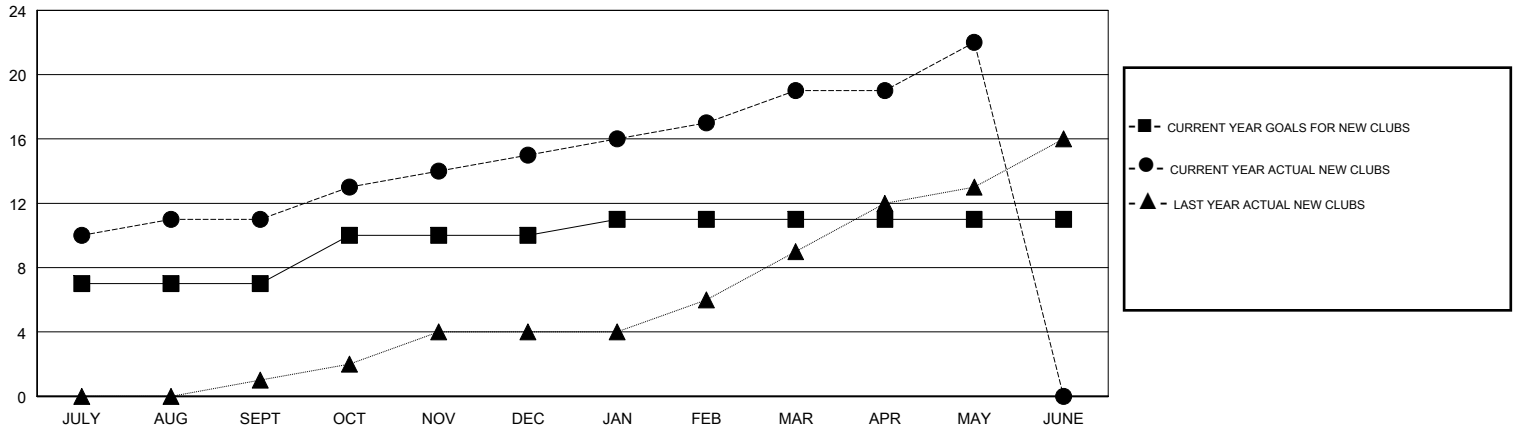
LOCATION INDIA

GMT CA

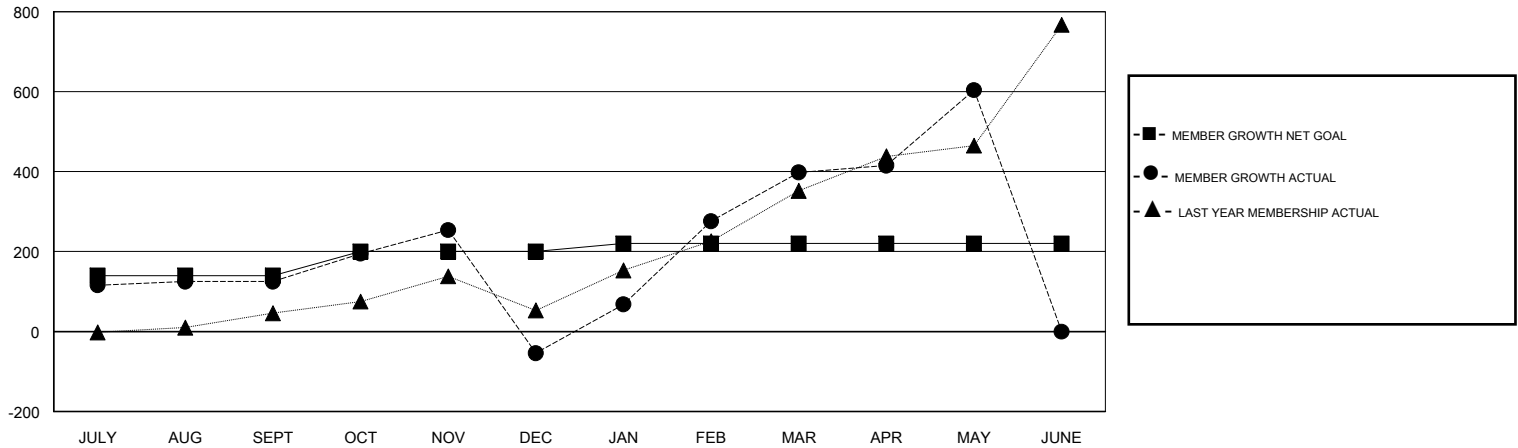
Clubs			
RESULTS FOR 2017-2018			
QUARTER	NEW CLUB GOAL	NEW CLUBS	DROPPED CLUBS
JULY/AUG/SEPT	7	11	0
OCT/NOV/DEC	3	4	11
JAN/FEB/MAR	1	4	1
APR/MAY/JUNE	0	3	1

Members			
RESULTS FOR 2017-2018			
QUARTER	MEMBER GROWTH NET GOAL	MEMBER GROWTH ACTUAL	DROPPED MEMBERS ACTUAL (including transfers)
JULY/AUG/SEPT	140	345	196
OCT/NOV/DEC	60	231	404
JAN/FEB/MAR	20	714	91
APR/MAY/JUNE	0	320	98

GOALS AND ACTUAL NEW CLUBS CUMULATIVE



GOALS AND ACTUAL MEMBERS CUMULATIVE



DROPPED CLUBS: 13	115 CLUBS OF 147 ADDED 1 OR MORE NEW MEMBERS	<u>GENDER DISTRIBUTION</u> MALE 4,673 (82.27%) FEMALE 1,007 (17.73%) Women Percentage Fiscal Year Goal: 5%
<u>DROPPED MEMBERS</u> DECEASED 12 CLUB CANCELLED 367 OTHER 410 TOTAL 789	<a href="#">CLICK HERE FOR CUMULATIVE MEMBERSHIP DATA</a>	TOTAL FAMILY UNIT MEMBERS 1,698 FAMILY MEMBERS PAYING HALF DUES 877